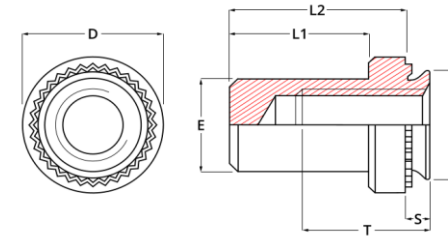


## Self Clinch Blind Nuts



Self Clinch Blind Nuts											
Thread Size	Material Code	Minimum Sheet Thickness	S Max	C Max	D Max	L1 Max	L2 +0.25 -0.25	E +0.25 -0.25	T Min	Hole Size +0.08 -0.0	Min CL To Edge Of Panel
M3 x 0.5	1	1.0	0.97	4.22	6.35	8.50	9.60	3.84	5.30	4.25	4.8
	2	1.4	1.38								
M4 x 0.7	1	1.0	0.97	5.38	7.95	9.80	11.20	5.20	7.10	5.40	6.9
	2	1.4	1.38								
M5 x 0.8	1	1.0	0.97	6.38	8.75	9.80	11.20	6.02	7.10	6.40	7.1
	2	1.4	1.38								
M6 x 1.0	1	1.0	1.38	8.72	11.10	12.70	14.30	7.80	7.80	8.75	8.6
	2	1.4	2.21								

### Materials And Finish

Carbon Steel Electro Zinc Plated



Suitable For Installation In Ductile Panels With A Maximum  
Recommended Hardness Of 80 HRB

Stainless Steel (A2) And Suitable For Installation In Ductile Panels With A Maximum Hardness Of 70 HRB

Suitable For Panels That Are Too Thin To Be Conventionally Tapped

INFORMATION AND DRAWINGS PROVIDED ARE FOR REFERENCE ONLY